


AART

Redefining
architecture™

- 
- **It's unsexy and ugly**
 - **Is about wheelchairs**
 - **Is for "the few"**
 - **Lowest common denominator**

Client – Muskelsvindfonden
Engineering - D&N / ARTELIA
Landscape- BSAA UrbanLAB
Consultants- Keingart & Bexcom

AART



the sport consultant



the architect

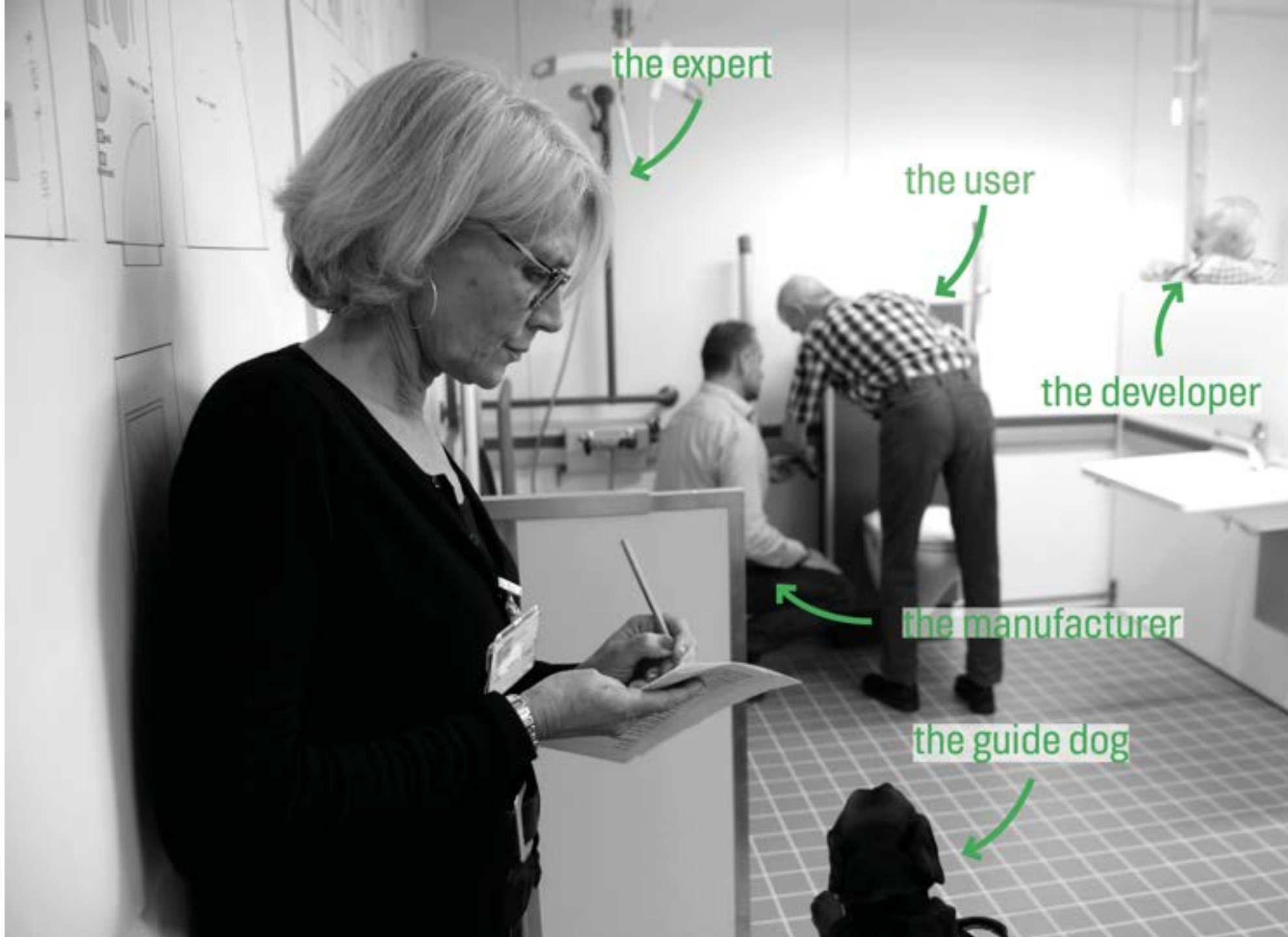




“

We must be able to follow along each other...

- **Understanding the width of disability**
- **Is about ALL OF US - through life everyone will experience different disabilities.**
- **Away from the concept of accessibility, and towards a worldview that includes us all (physical, mental disabilities, gender, ethnicity, etc.)**



the expert

the user

the developer

the manufacturer

the guide dog

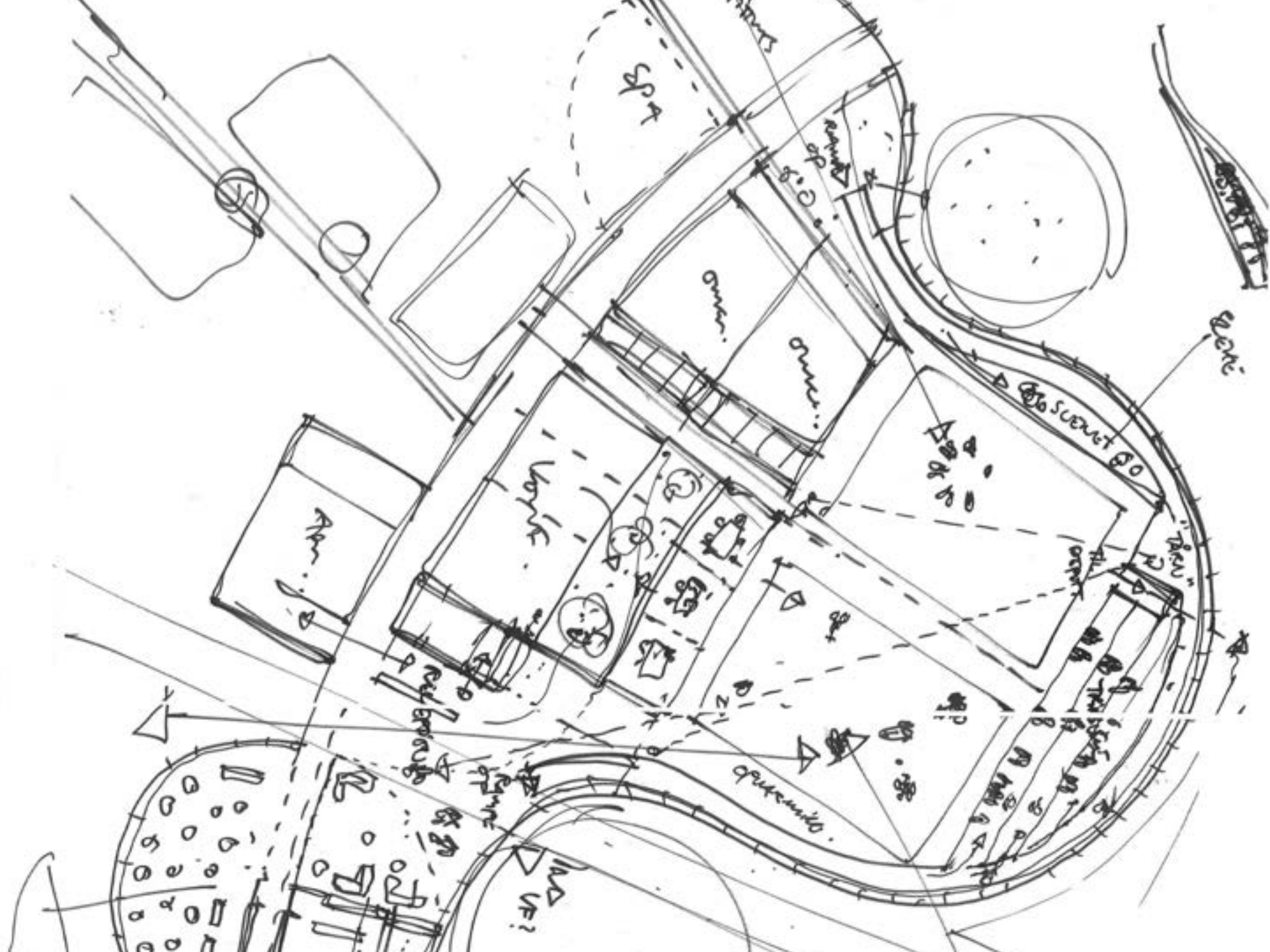
AART

“

The trend within the world of disability is exactly like within the healthy world – that more and more must happen, and it must be more and more extreme. There **MUST** be challenges in it – also where everyone can not join.

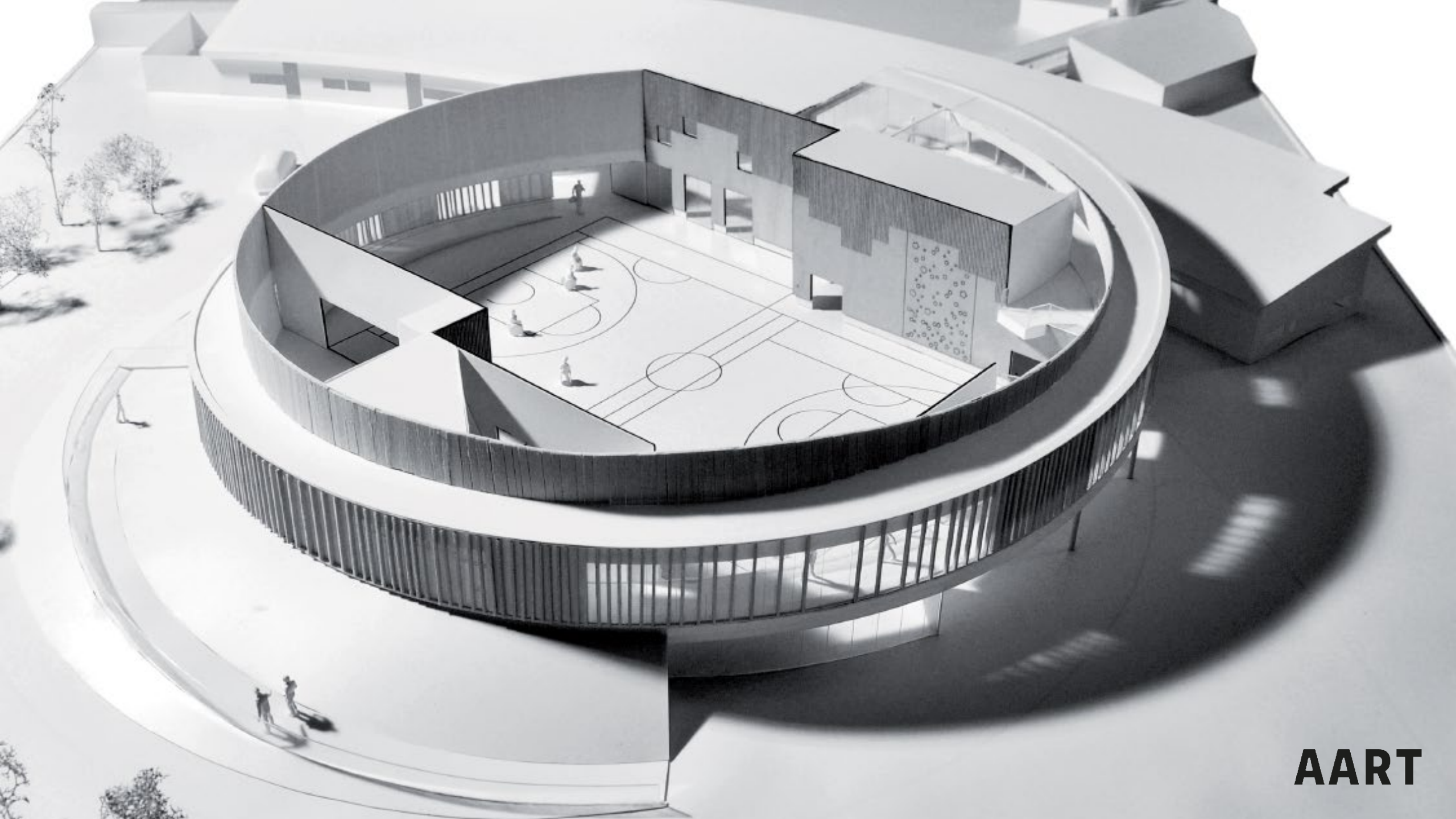
Man in user group
49 years old
User of manual wheelchair.



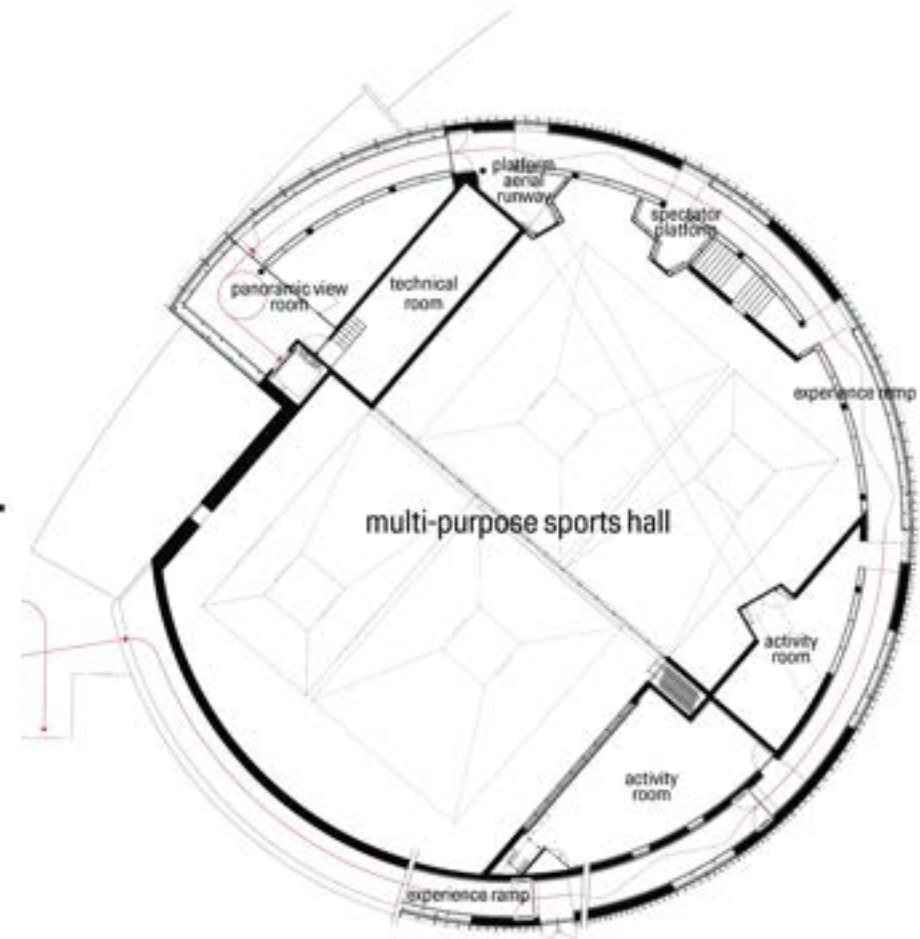


AART





AART



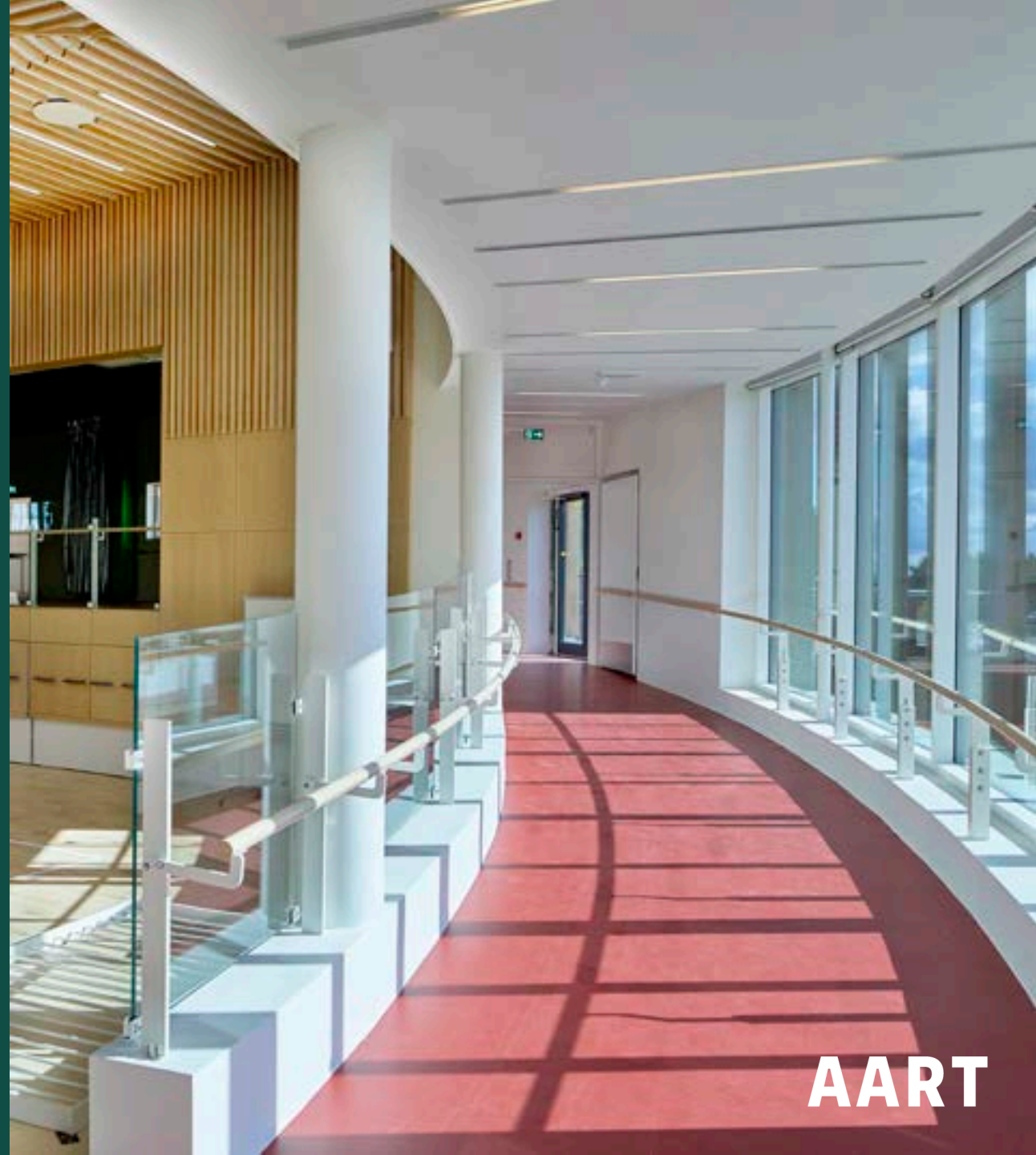
Multipurpose sports hall

- Climbing wall for everyone.



Multipurpose sports hall

- Climbing wall for everyone.
- 110 meter long activityramp with rests and experiences zone that motivate physical activity.



Multipurpose sports hall

- Climbing wall for everyone.
- 110 meter long activity ramp with rests and experiences zone that motivate physical activity.
- The worlds first cable car for wheelchair users.





AART



Play, experiences and new friendships

“

Here the children get the life
they do not normally have.

Parent of child with muscular dystrophy



AART



Architecture = Freedom

“

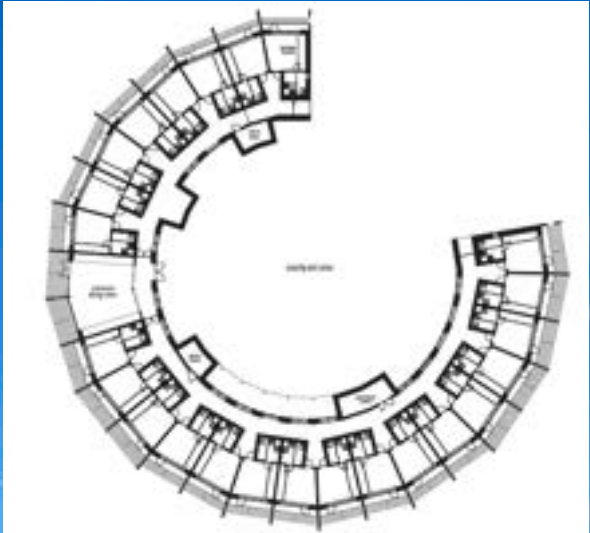
The fact that architecture can be equal with freedom, we have never encountered before

Conclusion from Alexandra Instituttet



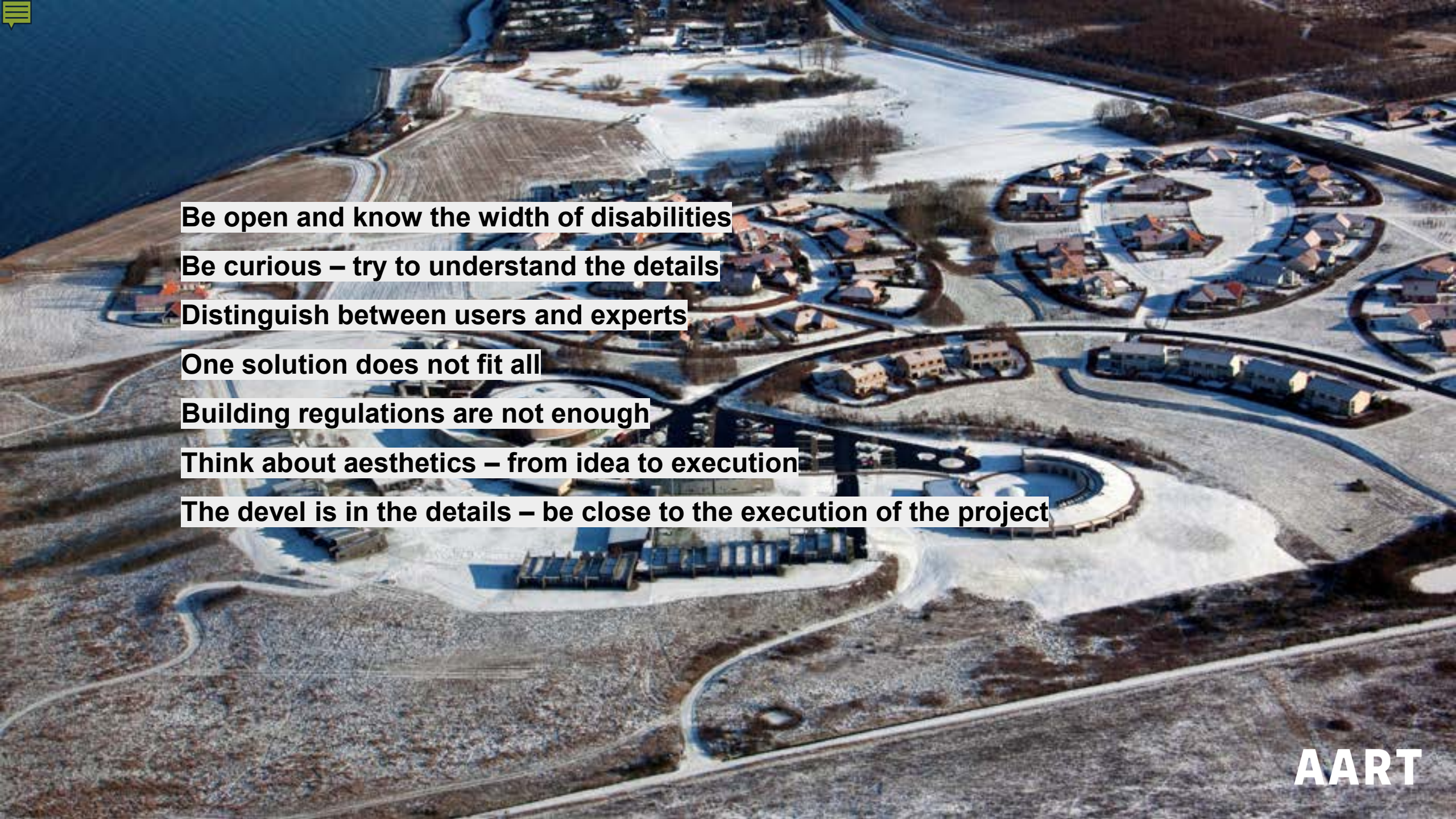


Foto / Henrik Ib Jørgensen





AART

An aerial photograph of a residential development. The houses are arranged in a circular or semi-circular pattern, with winding roads connecting them. The ground is covered in snow, and there are some trees and open areas. The overall scene is a mix of built-up areas and natural elements.

Be open and know the width of disabilities

Be curious – try to understand the details

Distinguish between users and experts

One solution does not fit all

Building regulations are not enough

Think about aesthetics – from idea to execution

The devil is in the details – be close to the execution of the project



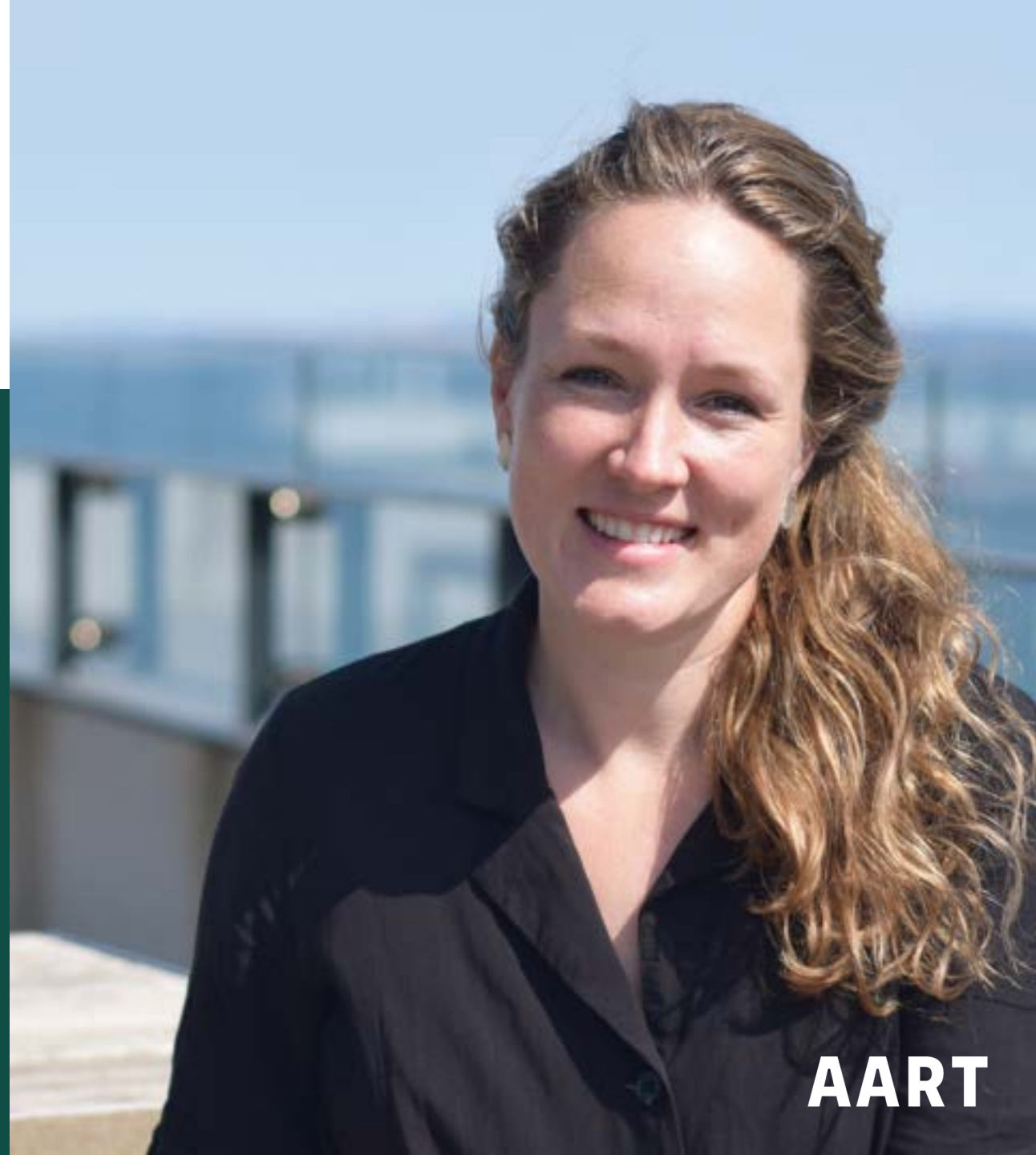
Visit us on AART.dk

[LinkedIn](#) / [Facebook](#) / [Instagram](#)

Partner / Business Relation Manager / MA in Architecture

Kathrine Hegner Stærmose

khs@art.dk / +45 41 72 80 87



AART