

Tokyo Mobility Transfer

Presentation for Bevica Foundation

March 1

2025

Professor

Ole B. Jensen

Department of Architecture, Design and Media Technology



AALBORG UNIVERSITY
DENMARK

How you develop your idea?

- For 25 years I have made field studies related to my research in urban design, mobility, and public spaces
- In 2022 and 2023 I was in Tokyo studying urban mobility HUBs (transport nodes + shopping centers + public facilities)
- I used my contacts from then to set up the Bevica field study
- During the last years I have turned my interest to Universal Design



How you develop your idea?

//

- I knew from my trips to Tokyo, that there is a lot of Universal Design in their public spaces (tactile pavements, audio systems etc.)
- So, I wanted to return to Tokyo to see the interventions and to talk to designers, planners, NGOs, and professionals about what we might learn from Tokyo in Denmark
- I did not engage with users ... I wanted to, but I had only one week so I needed to be practical ... But I'll go again anytime!





My Research Question

- *What can we learn from Tokyo in relation to universal and inclusive ways of designing and organizing human mobility within public spaces, using a mobilities understanding instead of an accessibility framework?*

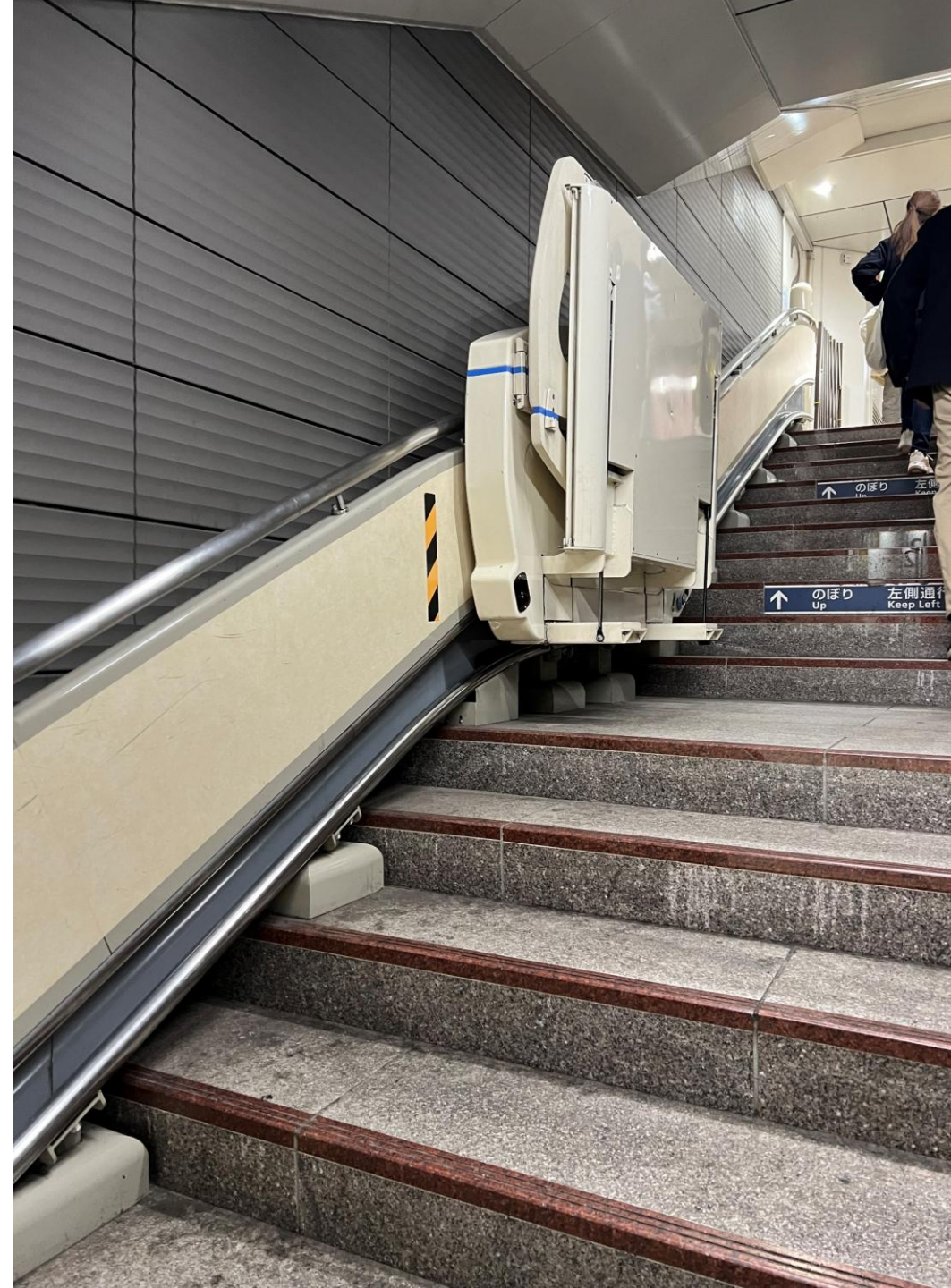
Drifting in Tokyo I

- Next to the meetings presented above I walked a lot on the streets of Yokohama and Tokyo (I also took trains extensively – you cannot travel Tokyo without using the trains!)
- During these random walks and rides I photographed and registered a great number of examples of universal and inclusive design in public spaces



Drifting in Tokyo II

- From tactile paving, to sound aids, special handrails, and many other devices the presence of disability aids in public space is overwhelming and very conspicuous to the 'European eye'
- Hence my new knowledge and insights were gained via personal meetings and interviews with experts, as well as from ethnographic observations and field studies during my many city-walks and train-rides



Findings 1

- First of all, there are distinct differences between Universal Design/Inclusive Design in Japan and Denmark. Having said that, it is impossible to ignore the massive presence of UD in Japanese public space. The number of tactile tiles, audio signals, extra handrails, physical ramps, and other mobility affording devices in Tokyo is impressive.



Findings 2

- A second finding is the fact that despite a very wide array of material and physical interventions and solutions many places in Tokyo are mobility accommodating due to a mix of physical intervention and organizational capacities. It became clear both from speaking with train companies but also with Professor Toshiki Nishiyama at Tokyo City University on the general trend in Japan, that educating staff into some level of 'hospitality awareness' was considered pivotal.



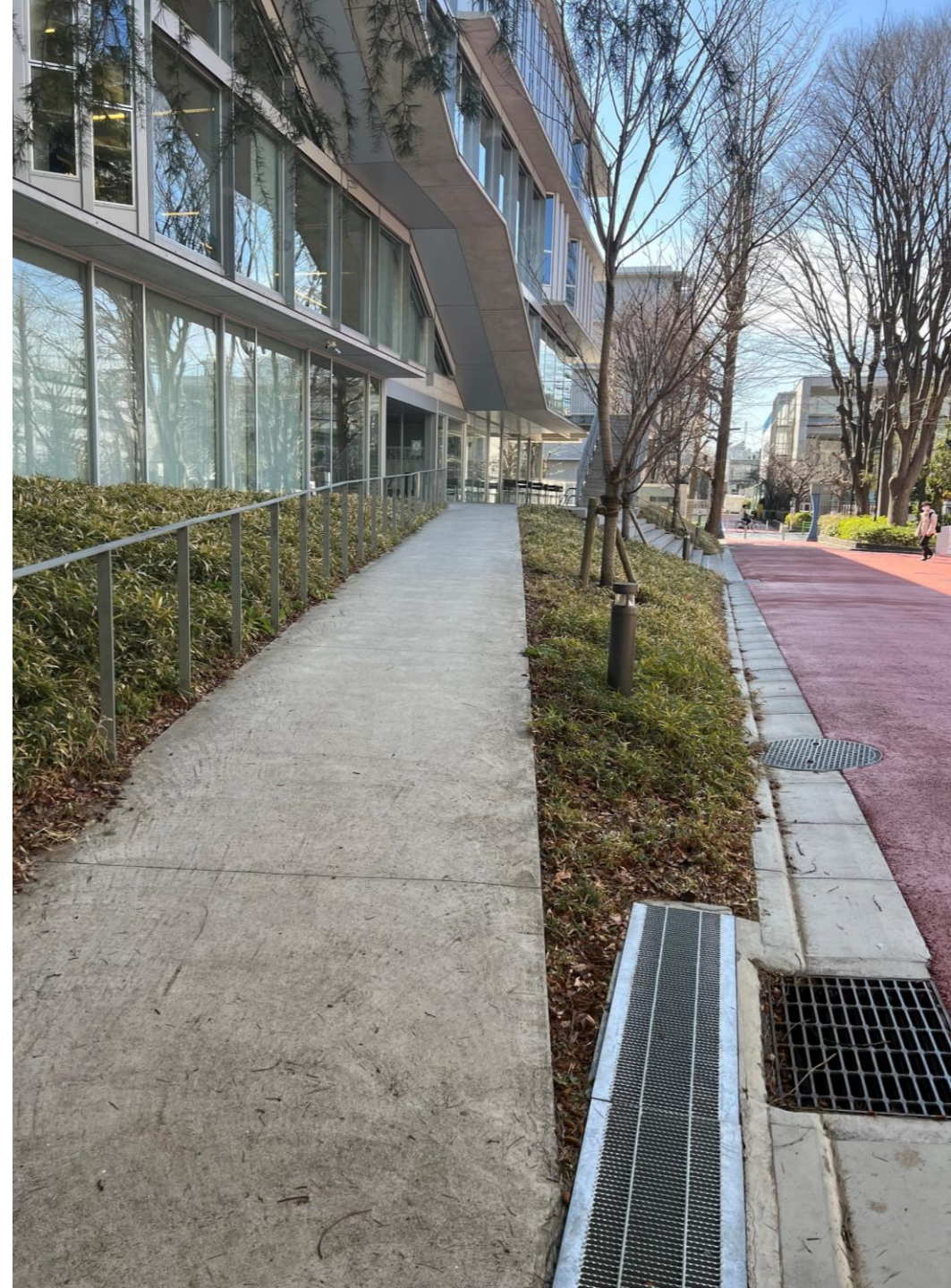
Findings 3

- A third point somewhat related to the former is the fact that Universal Design is taught in kindergarten, elementary schools, and high schools. Both from the interview with Professor Toshiki Nishiyama at Tokyo City University but also the interview with the NGO 'Gentle Yokohama Club' it became clear that there is a widespread practice of learning children and students about disability as well as how to assist people in public spaces.



Findings 4

- Fourth and finally, on the notion of ‘mobility’ instead of accessibility things becomes somewhat more complicated. I would start by pointing out that most Japanese people see UD (and inclusive design) from the point of view of accessibility or instrumental transportation. What this means is that they see it as a matter of making wide enough space, good enough ramps, or well working tactile pavements that would enable a disabled person to go from A to B as best as possible.



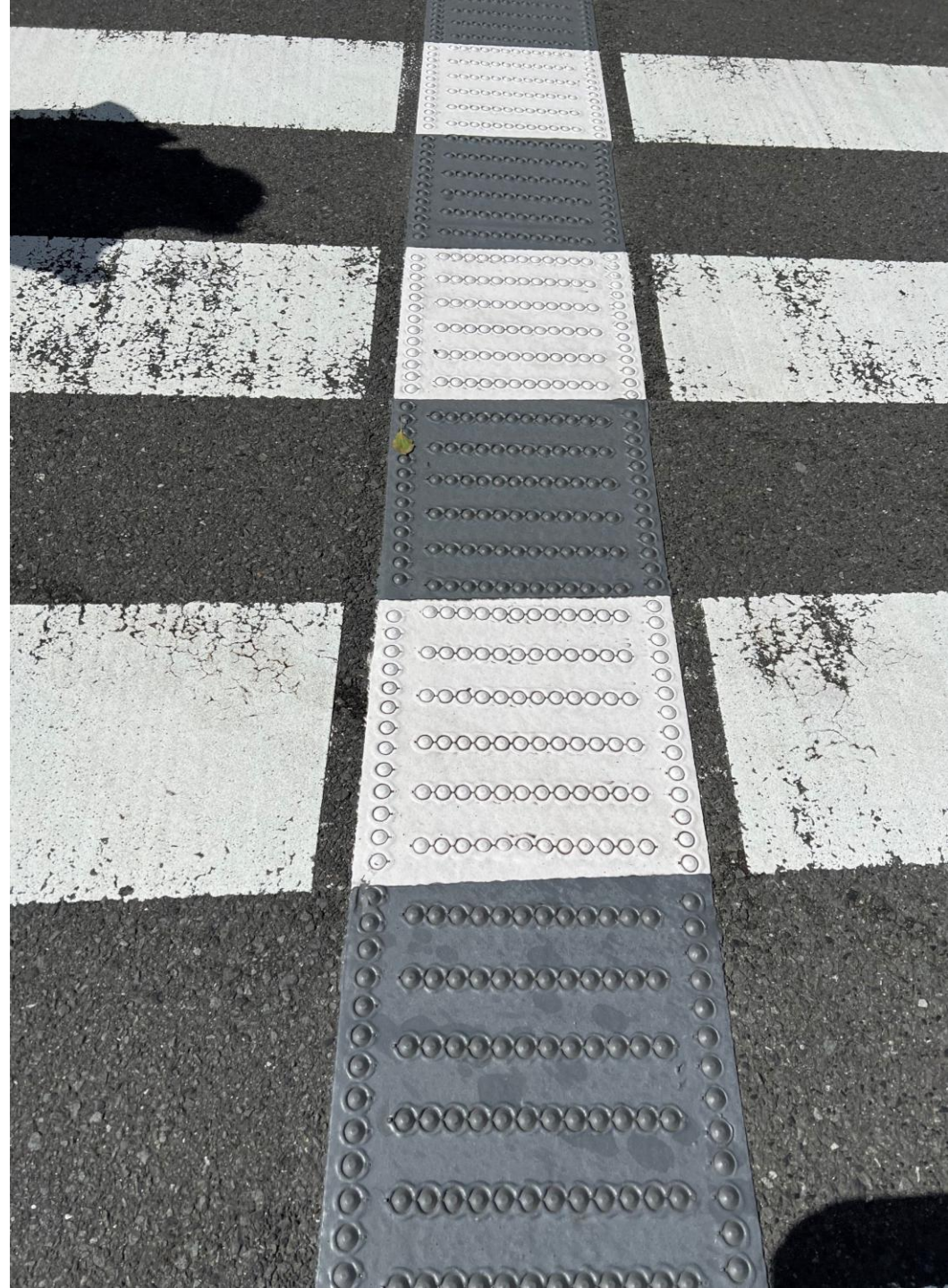
Scholarship output I

- Firstly, the scholarship enabled data and information gathering in Tokyo. In other words, the scholarship made possible for me to conduct research in a very interesting environment



Scholarship output II

- Secondly, I got to know many interesting people during the preparatory phases of writing the application. New network relations and colleagues with similar or overlapping interests have been identified during the process



Scholarship output III

- Thirdly, I found the requirement to actively profile and inform about my field studies on SoMe to be a huge asset. It so happens that because of the daily posting of my field trips and talks I had a lot of positive reactions and feedback (mostly on LinkedIn and X)



I made a LinkedIn Diary with daily entrees

Ole B. Jensen · Dig
 Professor and Vice-head of Department for Research at Aalborg University, Architecture,....
 2d · 🌐

So I'm ready and in place to study universal design and mobility/accessibility in Tokyo and Yokohama ... thanks to the Bevica Foundation Scholarship I will explore this in detail over the next week #UniversalDesign #BevicaScholarship #mobility #urbandesign #universaldesign #leavenoonebehind #aaucrate

Se oversættelse



Ole B. Jensen er sammen med **Toshiki Nishiyama**.
 18 t. · 🌐

Had three amazing meetings today. Kick off with Professor Toshiki Nishiyama on the general use of universal design in Japan. This was followed by an interesting conversation with "social designer" Miho Tanaka from the studio "cocore", followed by an interview with Manami Murai and Miya Takenaka from the JR-East rail Company about their universal design thinking.

#UniversalDesign #BevicaScholarship #mobility #urbandesign #universaldesign #leavenoonebehind #aaucrate



Ole B. Jensen · Dig
 Professor and Vice-head of Department for Research at Aalborg University, Architecture,....
 1d · 🌐

...ves expanding. Today I met designer, Mr. Naoyuki Miyata after working many years as a successful Company he decided to go to Denmark and stay "where people across able and learn from each other. Eventually met a Danish product highly unusual (and beautiful) crutches. Mr. Miyata now manufacturing the products from Wilhelm Hertz in Japan. The products have won a large German Award but also the most prestigious Japanese design Award. I tried walking with the crutches and they are super light, very strong, and beautiful. The four materials of Carbon fibre, metal, Wood and leather comes together in a symbiosis that is truly amazing. They are very functional but foremost they are making the disability aid "disappear" and thus eroding the stigma of using artefacts for mobility support. There is much more depth to this story than I can possibly justify in a LinkedIn post so I urge you to explore the brand and its truly humanistic philosophy yourself

#UniversalDesign #BevicaScholarship #mobility #urbandesign #universaldesign #leavenoonebehind #aaucrate

Se oversættelse

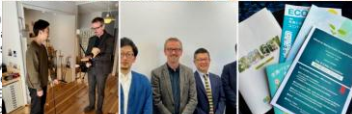


Ole B. Jensen · Dig
 Professor and Vice-head of Department for Research at Aalborg University, Architecture,....
 3m · Redigeret · 🌐

Another Day full of inspiring meetings. Started out with the fascinating story of a Japanese designer who came to Denmark and discovered a very special way of making crutches for people with disabilities. Thank you Naoyuki Miyata from Wilhelm Hertz Studio, Tokyo for sharing. Also thanks to Mr. Sawada from the Eco-Mobilities Foundation for sharing how socially committed you can work with vulnerable citizens and mobilities

#UniversalDesign #BevicaScholarship #mobility #urbandesign #universaldesign #leavenoonebehind #aaucrate

Se oversættelse



Ole B. Jensen · Dig
 Professor and Vice-head of Department for Research at Aalborg University, Architecture, Design and Medi...
 nu · 🌐

There are distinct differences between Universal Design/ Inclusive Design in Japan and Denmark. These require a more subtle report that I will produce for the Bevica Foundation. Having said that, it is impossible to ignore the massive presence of UD in Japanese public space ...

#UniversalDesign #BevicaScholarship #mobility #urbandesign #universaldesign #leavenoonebehind #aaucrate

Se oversættelse



...inspiring meeting with an NGO that for 20 years has been design and planning, organizing city walks for people with disabilities and promoting social activities in the city.

#UniversalDesign #BevicaScholarship #mobility #urbandesign #universaldesign #leavenoonebehind #aaucrate

Se oversættelse



... Tokyo. We kicked off with a panel discussion organized by my perfect hosts Professor Nobuharu Suzuki and Dr. Fumihiko Omori. Thanks for supporting my visit!

#UniversalDesign #BevicaScholarship #mobility #urbandesign #universaldesign #leavenoonebehind #aaucrate



I met a lot of people and collected a lot of business cards!



Thank you for your attention!



AALBORG UNIVERSITY
DENMARK

